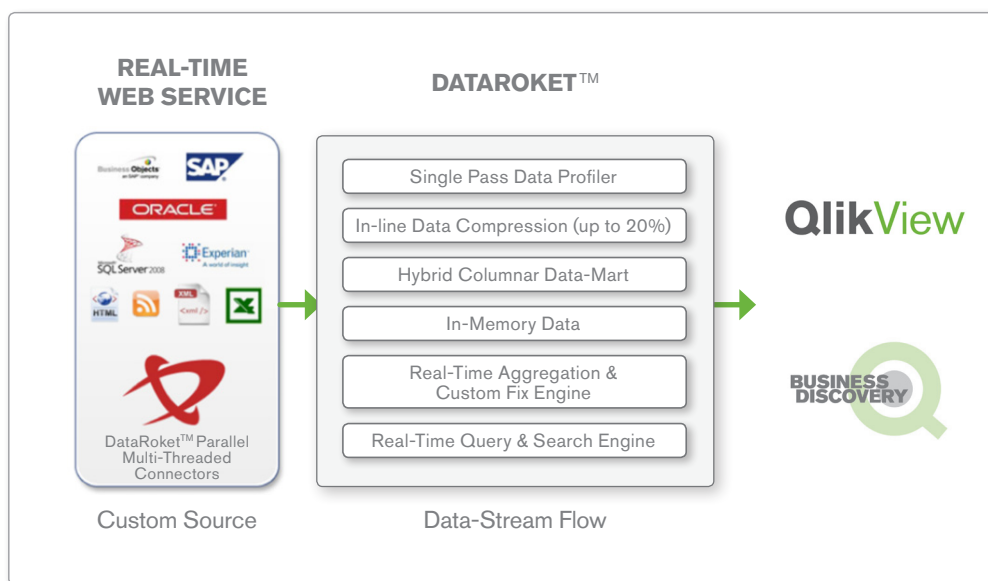


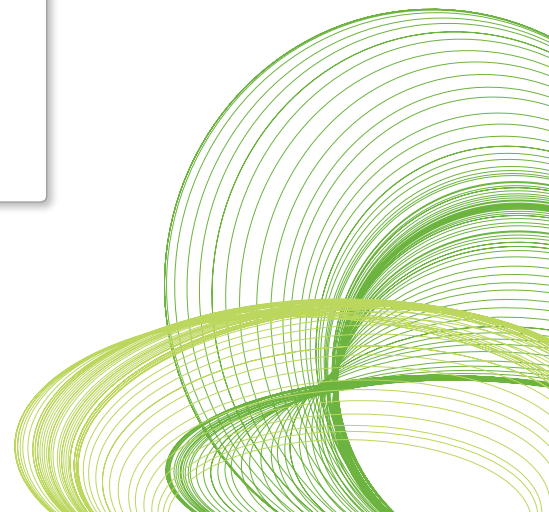
QLIKVIEW CONNECTOR FOR DATAROKET

Expanding the data sources horizon for Business Discovery

Many organizations have invested in multiple business intelligence and data storage solutions as part of their overall business intelligence platform. With the QlikView Connector for DataRoket, data residing in these business intelligence platforms can be seamlessly integrated into the QlikView environment, providing Business Discovery capabilities for forging new paths to insight and decision. As a leader in data integration with real-time accelerated data acquisition capabilities, DataRoket provides the ability to leverage existing information assets by integrating data from both structured and unstructured data sources into a single, easy to deploy platform. By combining DataRoket's data integration capabilities and QlikView's associative in-memory platform, business users can perform quick, flexible, visual, ad hoc analysis and reporting to enable Business Discovery on both structured and unstructured data sources.



© 2012 QlikTech



EXTRACT MORE VALUE FROM YOUR BUSINESS INTELLIGENCE PLATFORM

QlikView Connector for DataRoket can be used to extend the value of your enterprise business intelligence platform. Many enterprise organizations acquire different business intelligence and data storage solutions over time, resulting in data silos. DataRoket's platform connects, transforms, associates and aggregates multi-domain data into a hybrid in-memory and persistent real-time data repository. With QlikView Connector for DataRoket, the integrated data from DataRoket can be leveraged in the QlikView environment providing business users a rich self-service analysis experience.

BENEFITS OF QLIKVIEW AND DATAROKET

QlikView delivers power and simplicity without the cost or complexity of traditional BI tools.

- **Unlock the value of your business intelligence platform.** DataRoket extracts data from multiple sources and integrates it in the DataRoket data staging area. With QlikView Connector for DataRoket, this data can be loaded into QlikView, providing auto-consolidation into a single view for analysis.
- **Speed of deployment.** Deploy individual analyses and reporting solutions that integrate structured and unstructured data sources in days or weeks using QlikView Connector for DataRoket, and the QlikView script builder.
- **Ease of use.** QlikView is straightforward for business users to use and IT pros to manage. Most users become productive with QlikView after less than one hour of training.

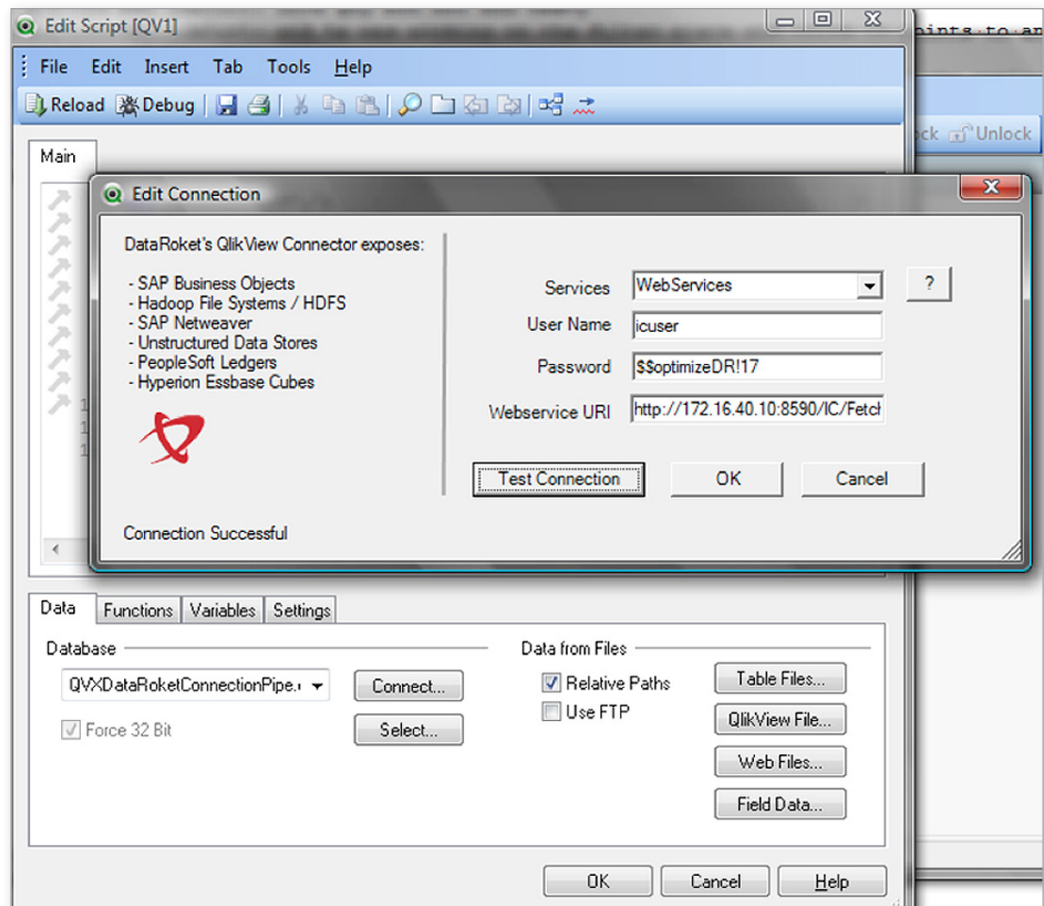
HOW THE CONNECTOR WORKS

DataRoket provides a web-based data integration platform. Once the data from different data sources is extracted and integrated in the DataRoket data staging area, this data can be leveraged in QlikView by providing agile, self-service business discovery capabilities.

QlikView Connector for DataRoket exposes these data sources:

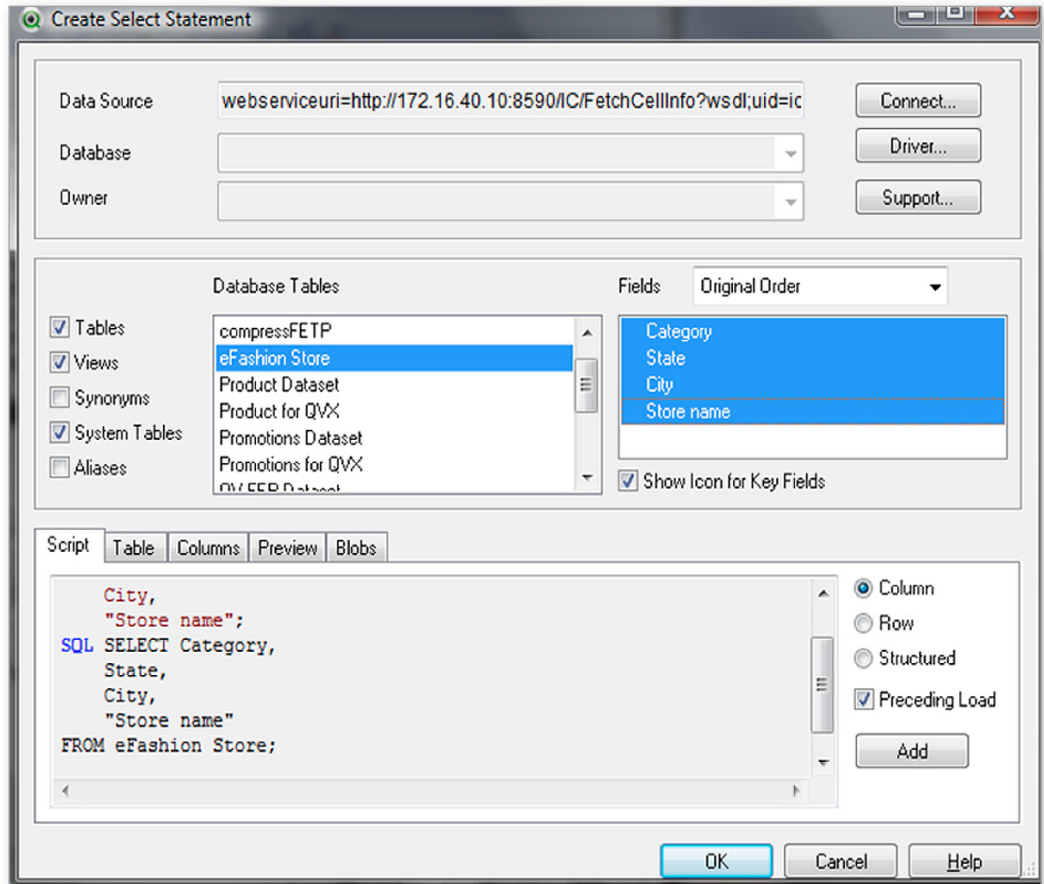
- SAP Business Objects
- Hadoop File Systems/HDFS
- SAP NetWeaver
- Unstructured data stores
- People Soft Ledgers
- Hyperion Essbase cubes

DataRoket developed a QlikView Custom Connector, which is an interface to enable data retrieval from DataRoket data staging area. QlikView communicates with the DataRoket Connector to retrieve data from their staging area.

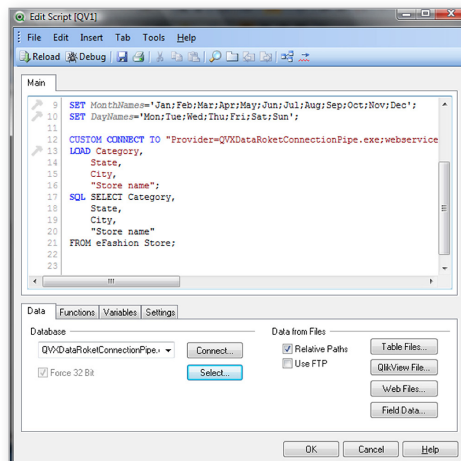


© 2012 QlikTech

The connector is listed under data connections. It uses a wizard for entering credentials to connect to DataRoket. Once the right credentials are entered, the connector automatically generates the connect string. After the custom connection string is created, the select wizard will show all of the available data tables that are stored in the DataRoket staging area. At this point, the sources of the data tables listed on the wizard are irrelevant as the data extraction now happens from the DataRoket data staging area.



The connector wizard lists the selectable columns for each data tables. Once the tables and the columns are selected on the wizard, the wizard automatically creates the load script syntax and the data can be loaded into QlikView in-memory data model.



DATAROKET SYSTEM REQUIREMENTS

DataRoket is a completely web based and OS independent application. The application can be deployed via DataRoket's SaaS environment, as a simple Virtual Appliance that can operate on VMWare or Xen Server, or as part of the traditional Business Intelligence environment.

QLIKVIEW SYSTEM REQUIREMENTS

QlikView Connector for DataRoket works with QlikView version 10 or later versions.

FOR MORE INFORMATION

Visit DataRoket web site: <http://www.dataroket.com>.